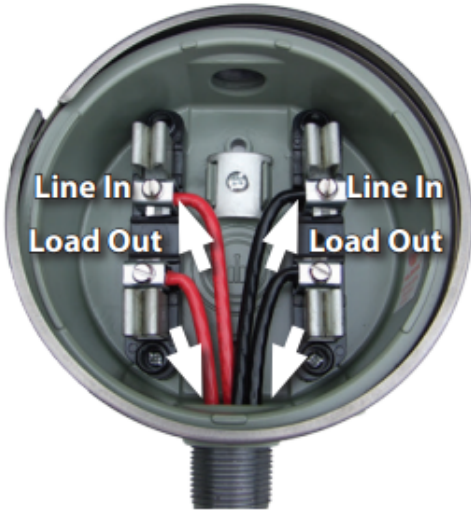


**DISCONNECT POWER BEFORE PERFORMING ANY WORK**



- Connect (2) incoming "hot" wires to the top lugs.
- Connect (2) load wires to the bottom lugs and back to the internal load center.
- #8 AWG copper or #6 aluminum wire is recommended.
- Install meter by gently pushing it into the meter stabs.



**About the Solid State Electric Meter (SSEM)**

- Type 2S
- 240 volt
- 3-wire
- Single-phase
- 5-digit LCD display
- Polycarbonate (plastic) cover



**IMPORTANT - The SSEM type of meter cannot be converted or used for 120 volt applications.**